



PIPE COUPLINGS

HAMMER UNION - FIGURE 100

1,000 PSI CWP - 1,500 PSI TEST

FEATURES & APPLICATIONS:

- Low pressure service. Manifold & general service. NPT Threaded Female ends. 2" available w/8RD threaded ends.
- Figure 100 is an economical union with precision machined metal-to-metal sealing surfaces. Recommended for water, oil and gas applications where working pressures do not exceed 10,00 PSI NSCWP.

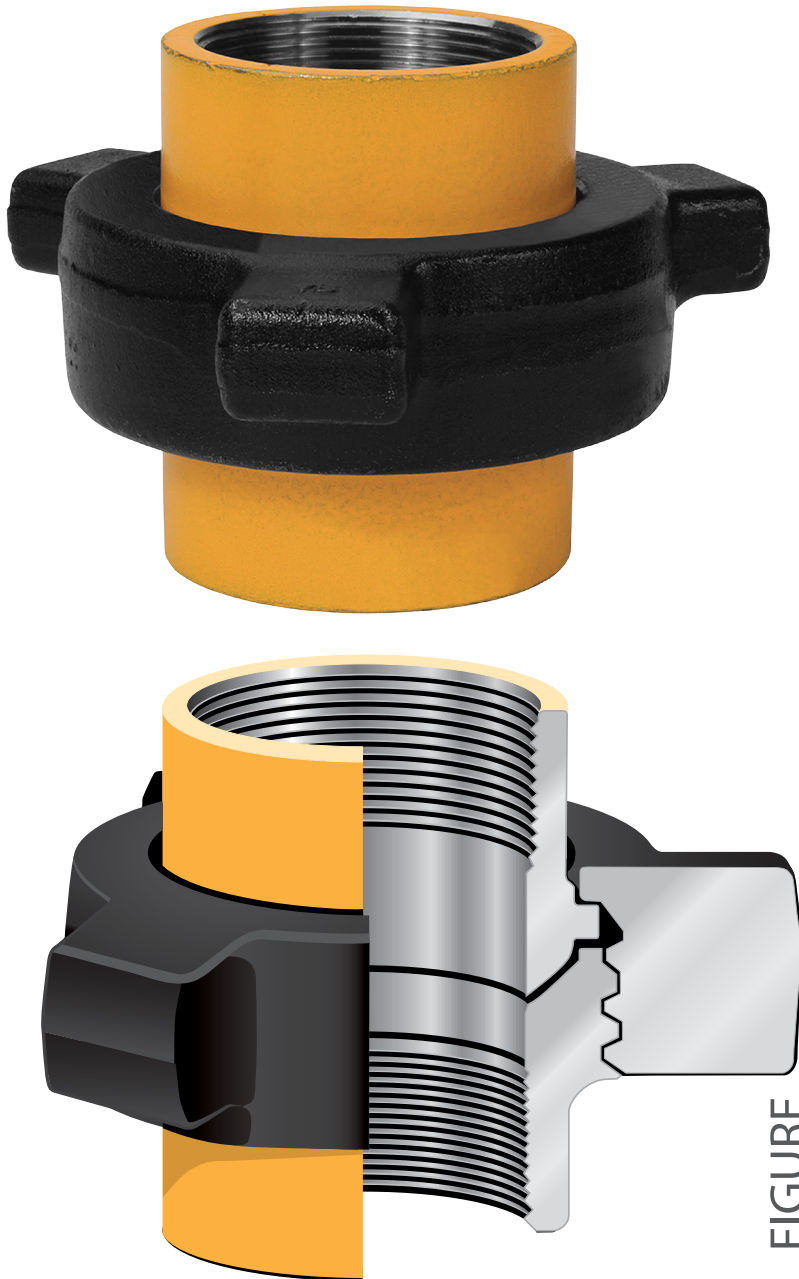


FIGURE
100

TECHNICAL DATA:

- Sizes: 2" - 8"
- Pressure Rating: 1,000 PSI NSCWP
- End Connections: Threaded
- Color Code: Yellow Subs / Black Nut

1000 PSI CWP	
SIZE	FIGURE 100
2"	HU100-200T
2-1/2"	HU100-250T
3"	HU100-300T
4"	HU100-400T
6"	HU100-600T
8"	HU100-800T



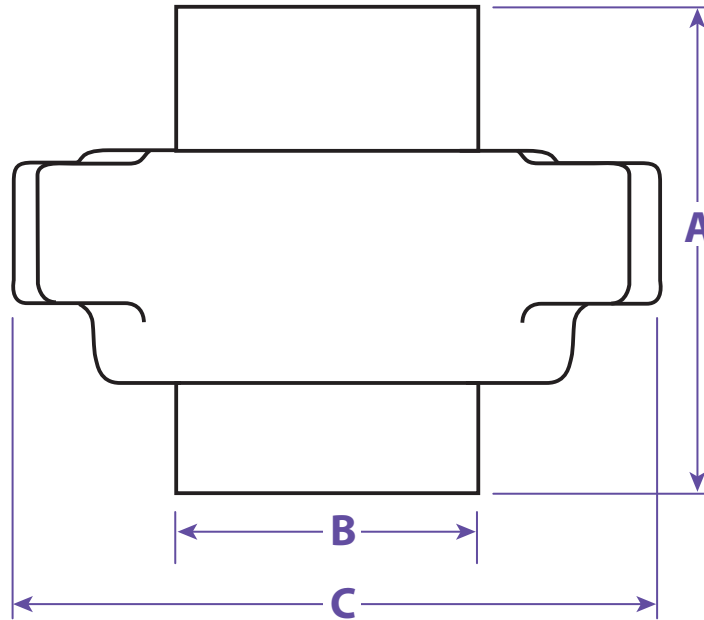
Information contained on this page is for general information purposes only. Seal Fast Inc. assumes no responsibility for errors or omissions for this product.



PIPE COUPLINGS
HAMMER UNION - FIGURE 100

1,000 PSI CWP - 1,500 PSI TEST

Low pressure service. Manifold & general service. NPT Threaded Female ends. 2" available w/8RD threaded ends.



Size / Weight

IN	MM	Lbs	A	B	C	ACME TPI	MATERIAL NUTS SUBS	Part #
2"	50	6.25	3.940	2.840	6.250	3 MOD	DI DI	HU100-200T
2-1/2"	65	10.05	4.490	3.390	7.925	3 MOD	DI DI	HU100-250T
3"	80	13.65	5.000	4.030	9.000	3 MOD	DI DI	HU100-300T
4"	100	22.00	5.940	5.230	10.560	3 MOD	DI DI	HU100-400T
6"	150	45.85	6.800	7.390	13.810	3 STD	DI DI	HU100-600T
8"	200	66.65	7.230	9.700	16.125	3 STD	DI DI	HU100-800T

Standard Service			Pipe Size(in)										End Connection
Fig. No.	CWP	Test	1	1 1/4	1 1/2	2	2 1/2	3	4	6	8		
	SUB	Nut											
100	1,000	1,500				✓	✓	✓	✓	✓	✓		T

TITLE PIPE COUPLINGS - HAMMER UNION FIGURE 100

DISCLAIMER

All drawings and specifications are subject to change without notice. Drawings represent general dimensions of our products. Seal Fast cannot guarantee the dimensions of the part will exactly match those in the drawing. This drawing is the property of Seal Fast Inc. Copying or reproduction of this drawing is expressly prohibited.

MATERIAL

DI

DRAWING NOT TO SCALE

PART #

HH100-xxxT

